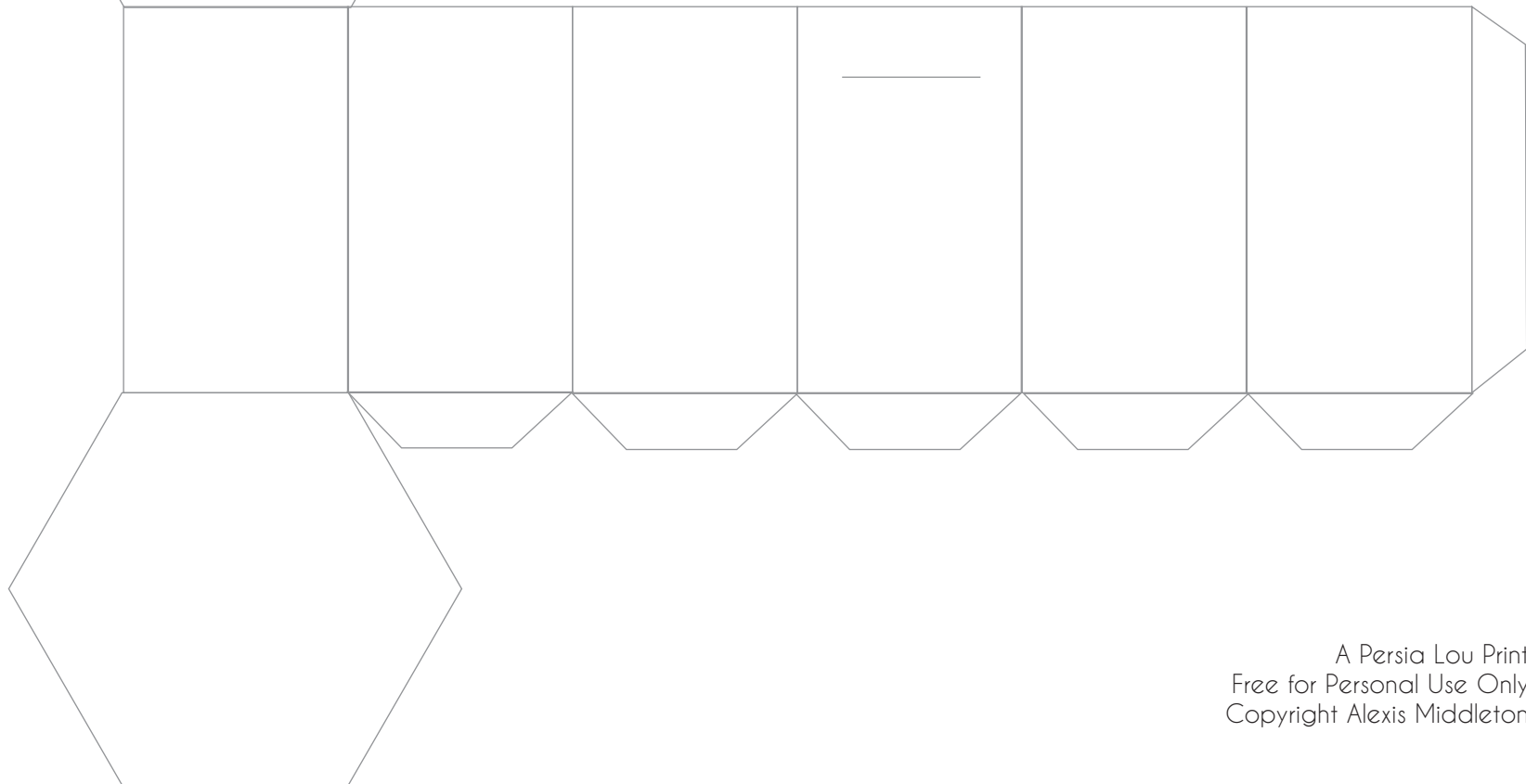


## Pineapple Favor Box Template

1. Cut along outside edges.
2. Score along fold lines.
3. Cut slits in box top and front.
4. Assemble box and glue tabs in place.
5. Attach pineapple top through slit in box top.
6. Fill and close box lid.



A Persia Lou Print  
Free for Personal Use Only  
Copyright Alexis Middleton